

LA70QS French Cylindrical Fuses

690 Volts ■ Very Fast-Acting ■ 10 – 100 Amperes



NEW



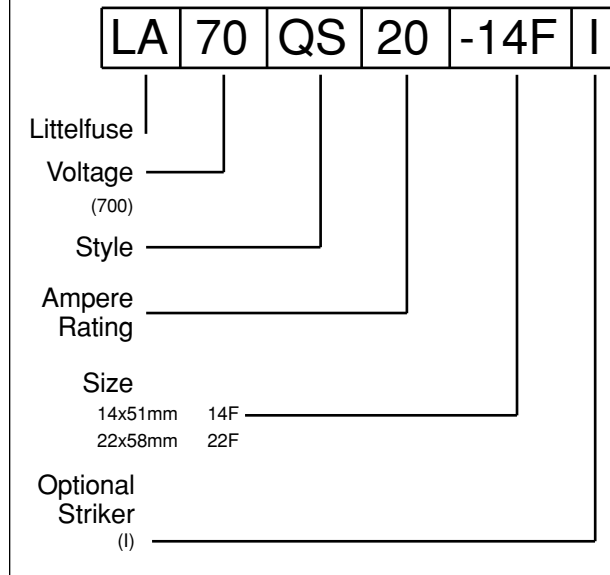
Littelfuse's French Cylindrical style semiconductor fuses are an extension to the LA70QS series. They offer a solid-fill design with high interrupting ratings and an optional striker for visual or remote blown fuse indication. The international 14x51mm and 22x58mm sizes are accepted worldwide

Special Purpose Fuses

SPECIFICATIONS

- Voltage Rating:** AC: 690 Volts
DC: 700 Volts
- Interrupting Rating:** AC: 200,000 Amperes
DC: 100,000 Amperes
- Ampere Range:** 10 – 100 Amperes
- Approvals:** UL Recognized under the components program.
CSA Certified.

ORDERING INFORMATION

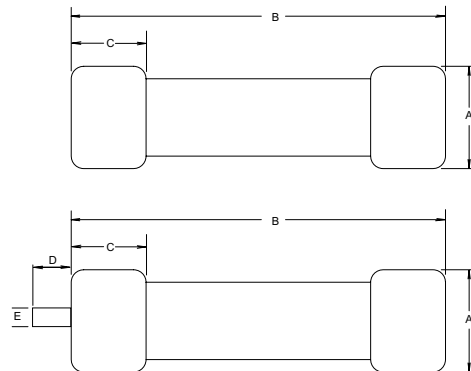


Catalog Numbers & Technical Data

Ampere Rating	Littelfuse Catalog Number (No Striker)	Littelfuse Catalog Number (With Striker)	Body Size	Maximum Clearing I ² t @700 VAC (A ² S x 10 ³)	Watts Loss @ Rated Current (W)
10	LA70QS10-14F	LA70QS10-14FI	14x51	0.04	3.5
12	LA70QS12-14F	LA70QS12-14FI	14x51	0.06	4.4
16	LA70QS16-14F	LA70QS16-14FI	14x51	0.10	4.8
20	LA70QS20-14F	LA70QS20-14FI	14x51	0.16	5.2
25	LA70QS25-14F	LA70QS25-14FI	14x51	0.27	5.8
32	LA70QS32-14F	LA70QS32-14FI	14x51	1.50	7.0
40	LA70QS40-14F	LA70QS40-14FI	14x51	0.70	10.7
50	LA70QS50-14F	LA70QS50-14FI	14x51	1.50	11.6
10	LA70QS10-22F	LA70QS10-22FI	22x58	0.025	4.0
15	LA70QS15-22F	LA70QS15-22FI	22x58	0.049	6.2
20	LA70QS20-22F	LA70QS20-22FI	22x58	0.076	8.0
25	LA70QS25-22F	LA70QS25-22FI	22x58	0.125	10.0
32	LA70QS32-22F	LA70QS32-22FI	22x58	0.27	11.0
40	LA70QS40-22F	LA70QS40-22FI	22x58	0.48	13.0
50	LA70QS50-22F	LA70QS50-22FI	22x58	0.80	14.9
63	LA70QS63-22F	LA70QS63-22FI	22x58	1.85	16.0
70	LA70QS70-22F	LA70QS70-22FI	22x58	2.80	16.5
80	LA70QS80-22F	LA70QS80-22FI	22x58	3.80	17.8
90	LA70QS90-22F	LA70QS90-22FI	22x58	5.64	17.0
100	LA70QS100-22F	LA70QS100-22FI	22x58	8.00	19.0

FUSE SIZE	Dimensions in mm				
	A	B	C	D	E
14x51 (no striker)	14	51	14	-	-
22x58 (no striker)	22	58	16	-	-
14x51 (with striker)	14	51	14	7.5	3.8
22x58 (with striker)	22	58	16	7.5	3.8

Dimensions for reference only.



Contact Littelfuse for characteristic curves.